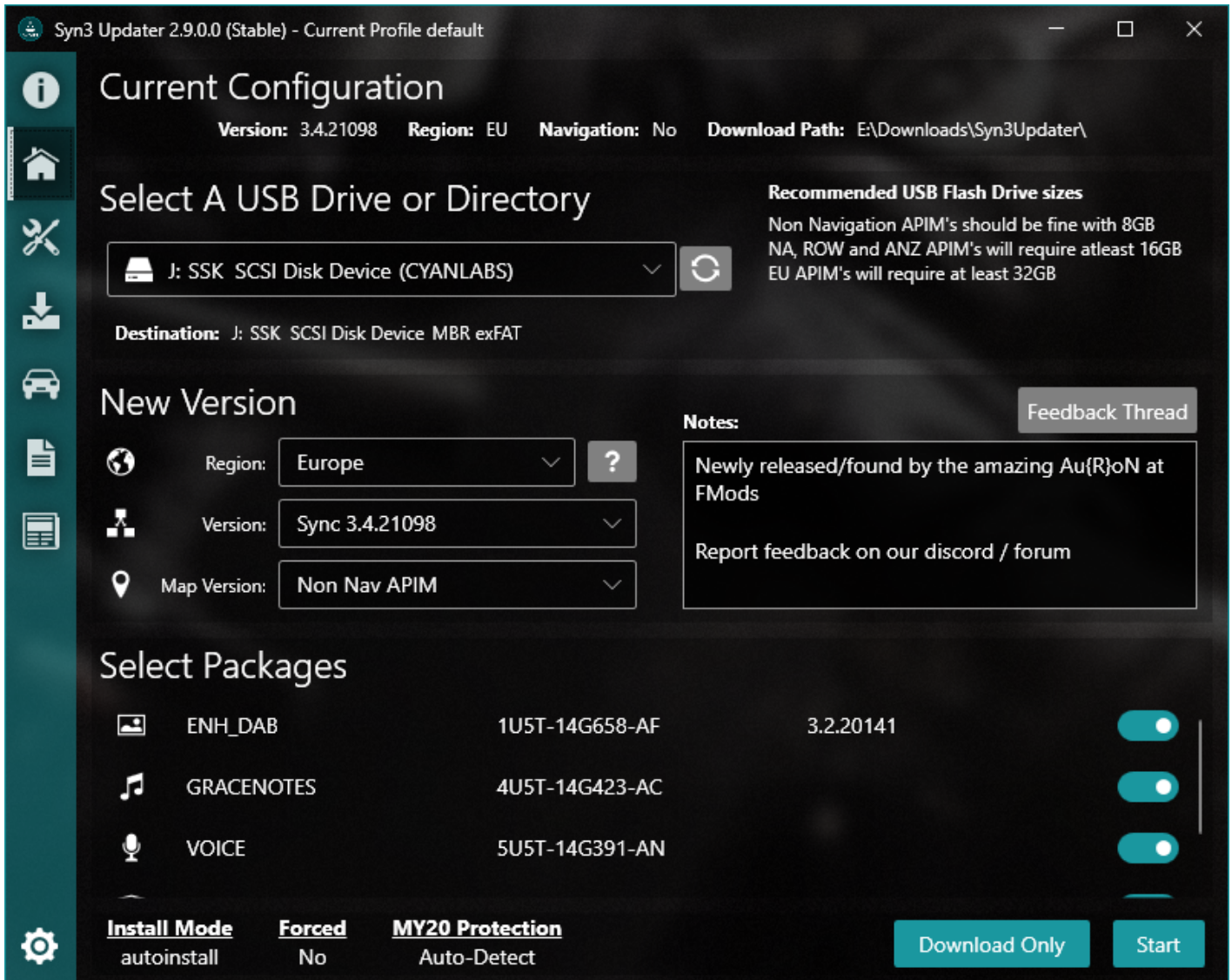


# Home Tab



This is the main tab of Syn3 Updater, here you configure what you want to install, below you can find detailed information about each section of this tab.

## Current Configuration

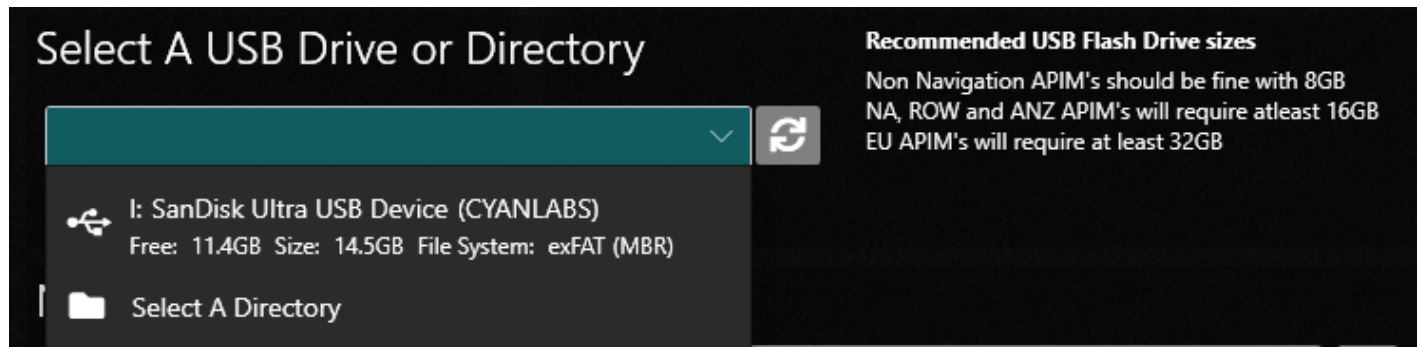
Here you can see a quick overview of your current "Car Configuration"

- Sync Version
- Region
- Navigation Variant

- Download Path

## Select A USB Drive or Directory

This is where you select a USB Drive, you can also select a Directory instead however note that if you later move this to a USB stick you need to ensure your USB is formatted correctly.



If your USB drive is not showing click the refresh button, if after refreshing it's still not showing please contact CyanLabs.

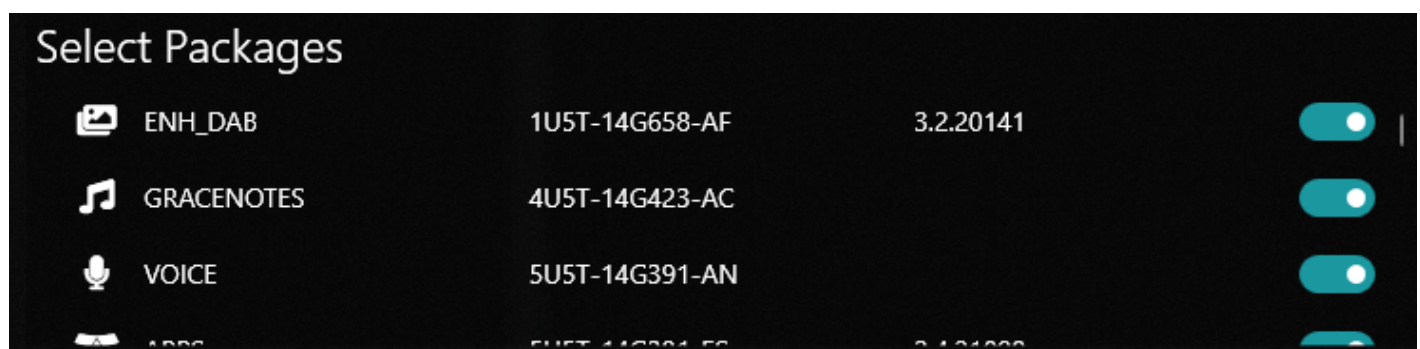
## New Version

This is where you can select your desired Region (If you change your Region you may need to update your AsBuilt), Version and Map Version.

You can click the "?" to see more information about which languages and maps are in in which region.

## Select Packages

Once you have selected the above options in "New Version" you will see the following section



Usually you will want to keep all of these selected, however you can unselect some if you prefer for whatever reason.

# Start

Right at the bottom of the tab you will see the following

- [InstallMode](#)
- Forced: Yes/No - If you have overridden the InstallMode this will show as Yes
- MY20 Protection - Enabled, Disabled or Auto-Detect

---

Revision #4

Created Sun, May 30, 2021 11:31 PM by [Fma965](#)

Updated Sun, Jun 13, 2021 3:40 PM by [Fma965](#)